

*“Pouring the Future, Preserving the Past.”* ®

# QUINN CONSTRUCTION, INC.®

## Community Medical Center Parking Garage Scranton, PA

OWNER: **CMC Health System**

ARCHITECT: **Wiss, Janney, Elstner Associates, Inc.**

GENERAL CONTRACTOR: **The Quandel Group, Inc.**

### PROJECT DESCRIPTION

Quinn Construction, Inc. provided all labor, material and equipment to complete the following Scope of Work:

- ◆ Removed existing concrete spalls from column and overhead locations @ 350 SF formed and installed a vertical repair material.
  - ◆ Routed and sealed existing random cracks and control/construction joints @ 7,000 LF.
  - ◆ Removed and replaced existing premolded expansion joint material @ 200 LF and installed a premolded system.
  - ◆ Mechanically prepared the existing decks, and installed a wear-balanced traffic deck coating system @ 100,000 SF.

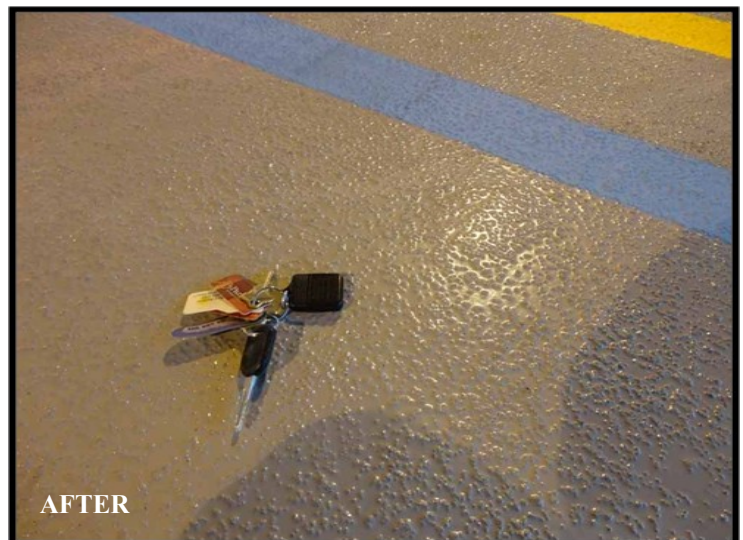
Project was completed in 2011

### CHALLENGES

The owner wanted to add protection to the unprotected supported levels.

### SOLUTIONS

Install a wear balanced Traffic Deck Coating System on the unprotected supported levels.



610.586.1332 ♦ 1017 4th Avenue, Suite 100, Essington, PA 19029